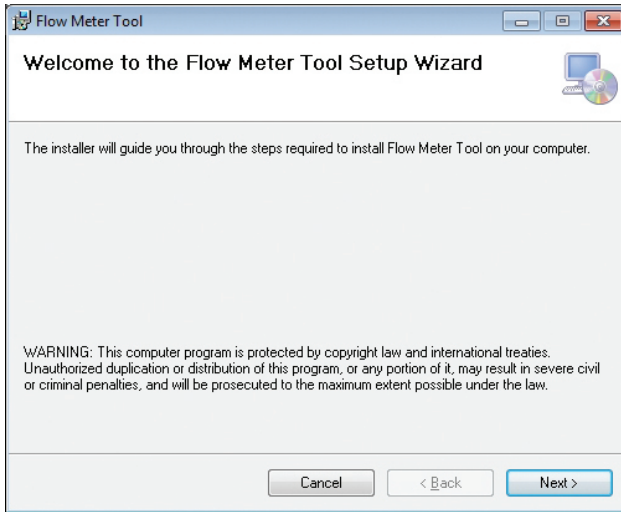
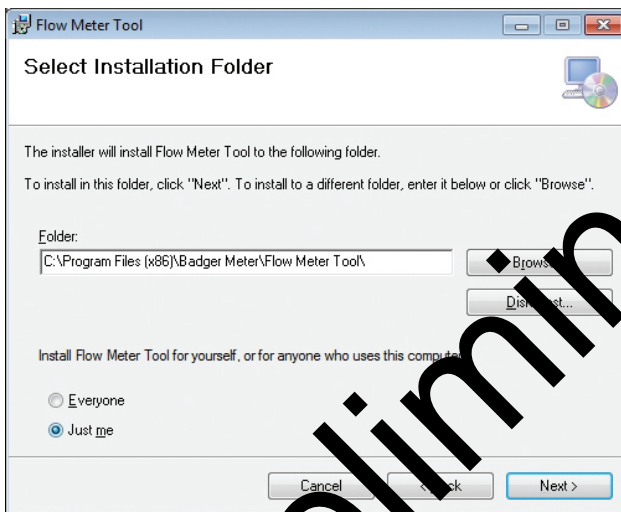


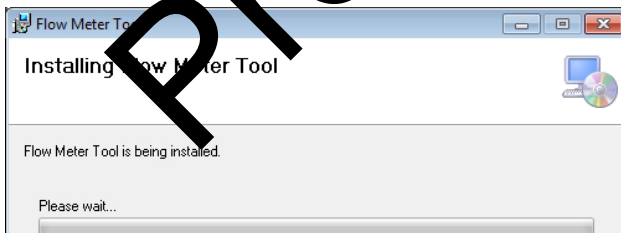
- Click **Next** to confirm that you want to install the tool.



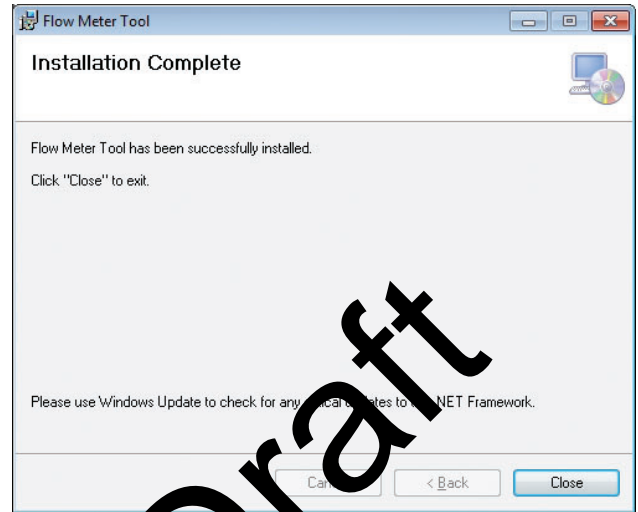
- On the *Select Installation Folder* screen, select the folder where you would like the tool installed. Click **Next**.



- Wait while the tool installs.



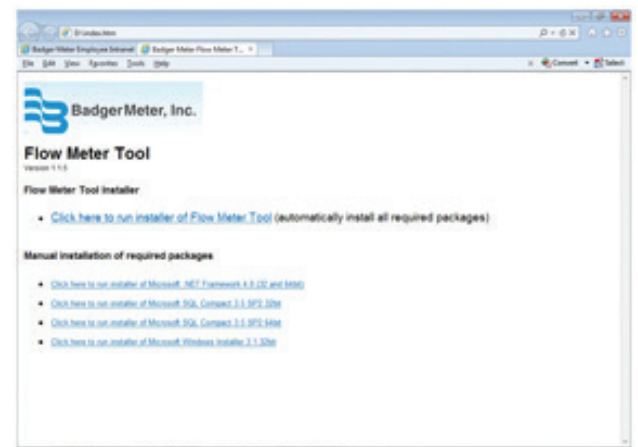
- When the installation is complete, click **Close**.



ALTERNATE FLOW METER TOOL INSTALLATION METHOD

If the CD does not automatically open:

- Navigate to the CD disk location.
- Click on the **Badger Meter Flow Meter Tool 1.1** folder to open it.
- Double-click the **index.htm** file to open it.
- On the *Flow Meter Tool* window, select **Click here to run installer of Flow Meter tool**.



- Perform Steps 3 through 6 under "Installing the Flow Meter Tool" in this document to complete the installation.

