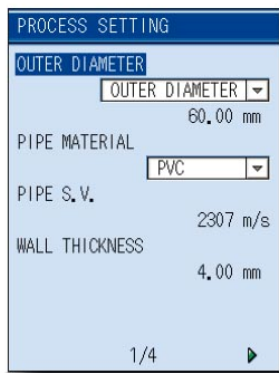
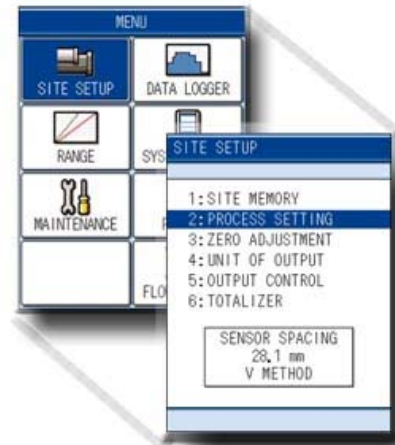
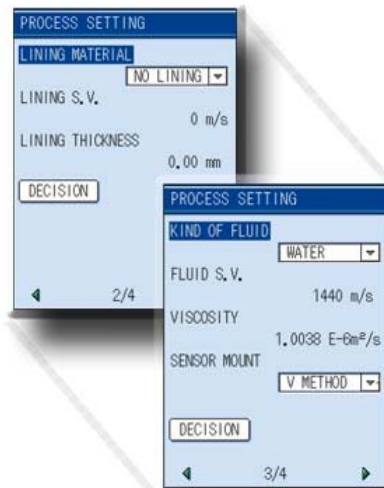


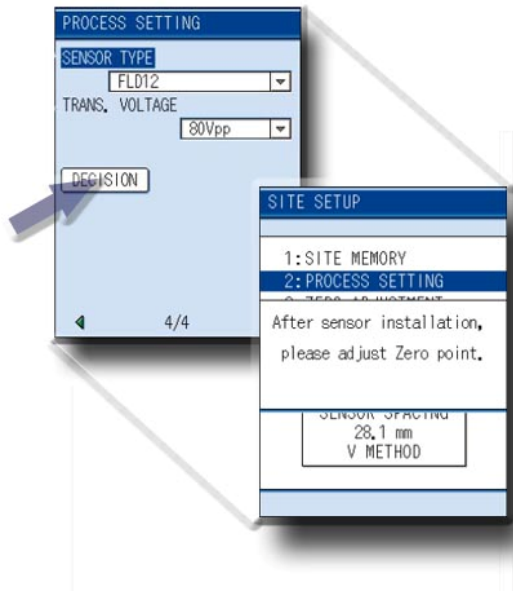
- Once you have identified the pipe's size and spec, you can begin setting up the meter.
- Begin by pressing the "MENU" key, then select "SITE SETUP", then "PROCESS SETTING" menu.



- In 1/4 of the Process Settings menu, we will set the 3 basic pipe parameters:
  - Outer Diameter
  - Material
  - Wall Thickness
- When completed, press the right key to shift over to menu 2/4.

- For typical applications, involving water and an unlined pipe, menus 2/4 & 3/4 can be skipped.
- One option to note on menu 3/4 is the sensor mounting method, any pipe under 24" can use the "V" mount, 24"+ the "Z" mount.



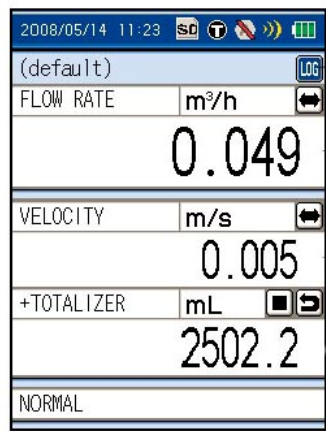


- The final steps are to Select your sensor type, then confirm your settings via the “DECISION” button.

- Once finished, the menu will return to the root site setup menu, and your new sensor spacing will be detailed at the bottom.

**\*\*NOTE: Adjusting the Zero Point is not required.**

- Set the recommended spacing on the transducers, then tighten the transducer position with the wide dials.
- Apply sonic grease to the sensor heads.
- Mount transducer onto pipe (preferably 10-15 pipe-diameters away from any bends or elbows).



- Connect the transducer cables from the meter to the transducers. Red is Upstream & Blue is Downstream.

- After a few seconds, the meter should acquire the signal and begin displaying your measurements.